

snow cones to chill your bones

History

In 2007, the PR1 Youth Corp. class decided to run their own business for the summer. After a few brainstorming sessions they decided on selling snow cones every Friday afternoon. As a group, they would decide how to spend or use the profits.

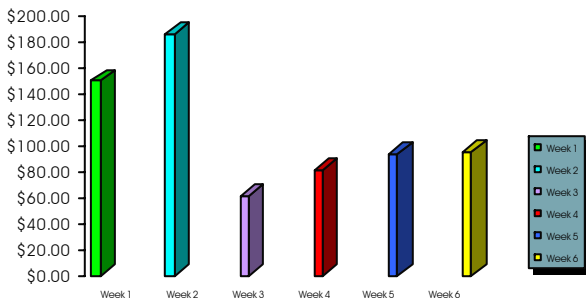
With assistance from POINT staff, the kids would be responsible for assigning job responsibilities, organizing shifts, purchasing supplies, marketing, etc.

Operations

The group voted on two volunteers to run staff meetings once a week. Topics discussed include profits from previous week, expenses to date, schedules, syrups and staff issues.

Snow Cone Breakdown

- ⇒ Cost of Snow Cone Machine: **\$533.83 PAID**
- ⇒ POINT investors agreed to lease the machine at 20% of the original cost=**\$106.76 PAID**
- ⇒ POINT Investors also agreed to loan **\$100.00** of start-up supplies such as syrups, pumps, cups, etc. **PAID**
- Both loans were paid off by Week 2 of our sales!**
- ⇒ Other supplies paid out of daily profits as need during the summer include **\$94.25** (ice, syrups). **PAID**



Overall, business sold **\$749.16** in snow cones and generous donations in just six weeks! After startup and ongoing supply expenses, they turn a profit of **\$449.18!**

As a group, the kids decided to take their profits and go on a field trip to Wet N' Wild in Orland, Florida.



for more information please call
813.628.9179
or visit our website
www.mypalmlrivercdc.com



PR1 Youth Corp.
is sponsored by Greater Palm River POINT, CDC,
funded through Bank of America and supported by
the Children's Board of Hillsborough County



Mapping Palm River's Future



7454 Palm River Road
Tampa, FL. 33619
P: 813.628.9179
F: 813.663.9404

← OPEN TO SEE MAP

the big picture:

PR1 Youth Corp.

In 2006, the POINT launched the **PR1 Youth Corp.**, a Community Mapping program for kids ages 12-15. During the 8-week program, kids had the opportunity to identify resources in Palm River, participate in planning for the revitalization of their Community and earn extra money!

Our likes and dislikes project

The first, assigned project was to canvas the Palm River area and take pictures and notes of the what the kids did and did not like about Palm River.

What we like:

Winston Park	Good hang out spot; After school recreational activities-baseball, football, track, tennis and playground
Palm River Park	Good hang out spot; After-school recreational activities-baseball and playground
78th Street Library	Good hang out spot; access to books, magazines and Internet access
TECO property (off 50th Street)	"Undiscovered" hang out spot; trails for hiking and bicycling, open fields for camping or gatherings, great view of Tampa Bay

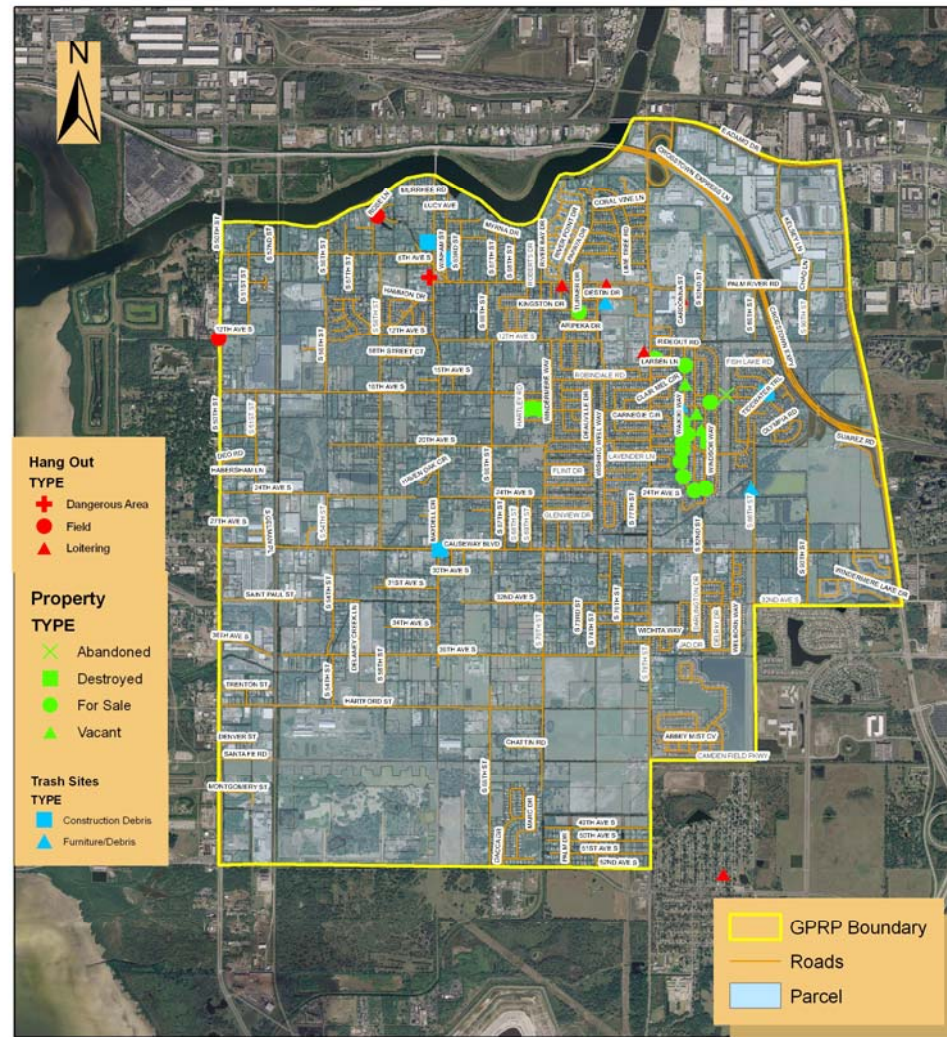
What we don't like:

Winston Park	Trash by dumpsters; need updated playground, huge open, field but not used
Palm River Park	Outdated playground
TECO property (off 50th Street)	Graffiti on roads, numerous trash sites, no parking lot; no entrance-way signage
Causeway Park	Small playground, no restrooms, insufficient picnic areas, large, unused field towards back



PR1 Youth Corp. Map Data

Greater Palm River Point, CDC - 2007



PROPERTY DATA

For property data, kids marked *abandoned, destroyed, for sale and vacant properties in several Palm River neighborhoods.*



HANG OUT DATA

For Hang Out data, kids marked areas of *loitering, danger, open fields and good hang out spots.*



TRASH DATA

For Trash data, kids marked areas trash sites that included *household, furniture/appliances, construction debris and hazardous.* Kids canvassed the neighborhoods around the Community.

PR1 Youth Corp Map Data

1 inch equals 3,000 feet



Greater Palm River Point, CDC
7454 Palm River Road
Tampa, FL 33619

